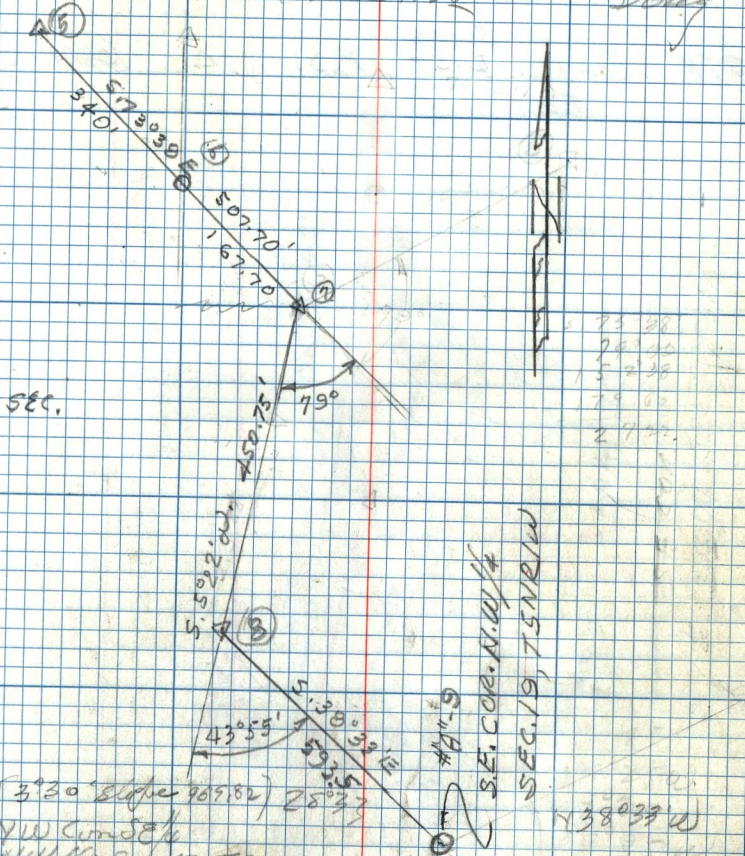


SLOP

5-21-77

FRED
DOWNS

#16 from 17.8.5m 5+135



SEC.

$3^{\circ}30'$ slope $(\tan 909.82)$ $28^{\circ}33'$
 NW Corn 58%
 NW 1/4 Sec 19 T5N R1W
 270 SLN
 1022.05
 1021.28

See Pg. #16